



GUNNISON CITY

Zoning Map

Updated October 19, 2023

By: Gunnison City Administrator
Dennis L. Marker

Legend

Roads

— Roads

Other Government Ownership

USDI Bureau of Land Management (BLM)

Utah School and Institutional Trust Lands Administration (SITLA)

Flood Hazard Areas

Special Flood Hazard Area - Zone A

Gunnison City Limits

Gunnison City Limits

Parcels

Parcels

Zoning Districts

(I-1) Manufacturing - Light Industrial

(CC) Central Commercial

(R&C) Mixed-Use Residential & Commercial

(R-4) Residential - Multi-family

(R-2) Residential

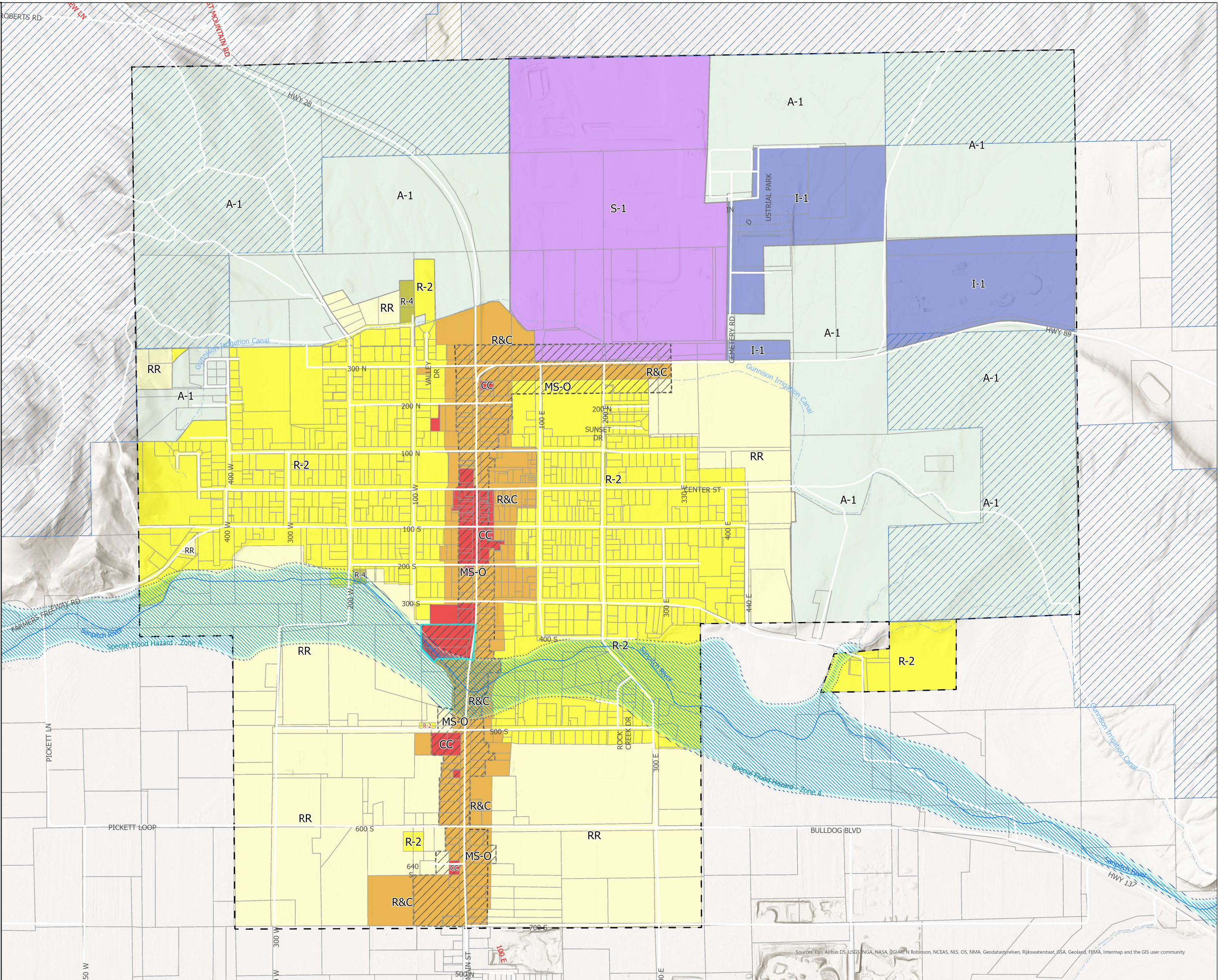
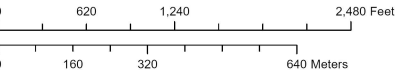
(RR) Residential Estates

(A-1) Agricultural

(S-1) Special Purpose - Institutional

(MS-O) Main Street Overlay

Sources:
Utah Geographic Resource Center (UGRC) Road and Highway Systems, Land Ownership, Stream and Flood Hazard data obtained from FEMA S_FLD_HAZ_AR.shp available from fema.gov. Parcels based on Sanpete County plat maps at www.sanpete.com. City Boundaries and Zoning information created by Gunnison City GIS Department. Hillshade available through ESRI.



Sources: Esri, Airbus DS, USGS, NOAA, NASA, IGNAR, N Robinson, NCEAS, NIS, OS, NMA, Geodatastyrelsen, Rijkswaterstaat, BSA, Geoland, FEMA, Intermap and the GIS user community

This map is for general representation purposes only. Property lines and their relationship to boundaries, streets, or other ground features must be field verified by competent, licensed professionals. Gunnison City assumes no liability for inaccuracies, incorrect data or variations with an actual survey.